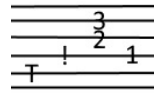


The Dirge



Rose, Rose, Rose-roughly

Ignez Pleyel

Largo



1. Lord of all be - low a bove God of friend - ship truth a - nd love
2. In this em - blem sad we see proof of one's mor - tal - i - ty
3. This great truth may we re - cieve tis not all of life to - o live



May the les - sons we im - part oh Be im - pressed on ev - ry heart.
All one's plea - sure and on - e's po - wer Fade and whi - ther in the hour
To our souls this truth a - pply oh Tis not all of life to die..